



**Tom and Annette Lantos Center for Compassion**  
1450 Rollins Road, Burlingame, CA 94010-2307  
650-340-7022 • 650-685-8428 fax • [www.PHS-SPCA.org](http://www.PHS-SPCA.org)

**FOR IMMEDIATE RELEASE**  
**October 17, 2018**

### **Peninsula Humane Society & SPCA Rescues Great Horned Owl Tangled in Kite String**

Woodside, CA—Thanks to a three agency response, an adult Great Horned Owl was rescued after she became entangled in abandoned kite string in Woodside. The Peninsula Humane Society & SPCA (PHS/SPCA), the San Mateo County Sheriff's Office and the Woodside Fire Protection District all assisted in saving the life of the owl.

“We responded to a call from a concerned resident on October 15 who had found a Great Horned Owl whose wing had been caught in kite string,” said PHS/SPCA’s Communications Manager Buffy Martin Tarbox. “The poor owl was hanging by her wing suspended between two trees. She was unable to free herself and without human assistance more than likely would have perished.”

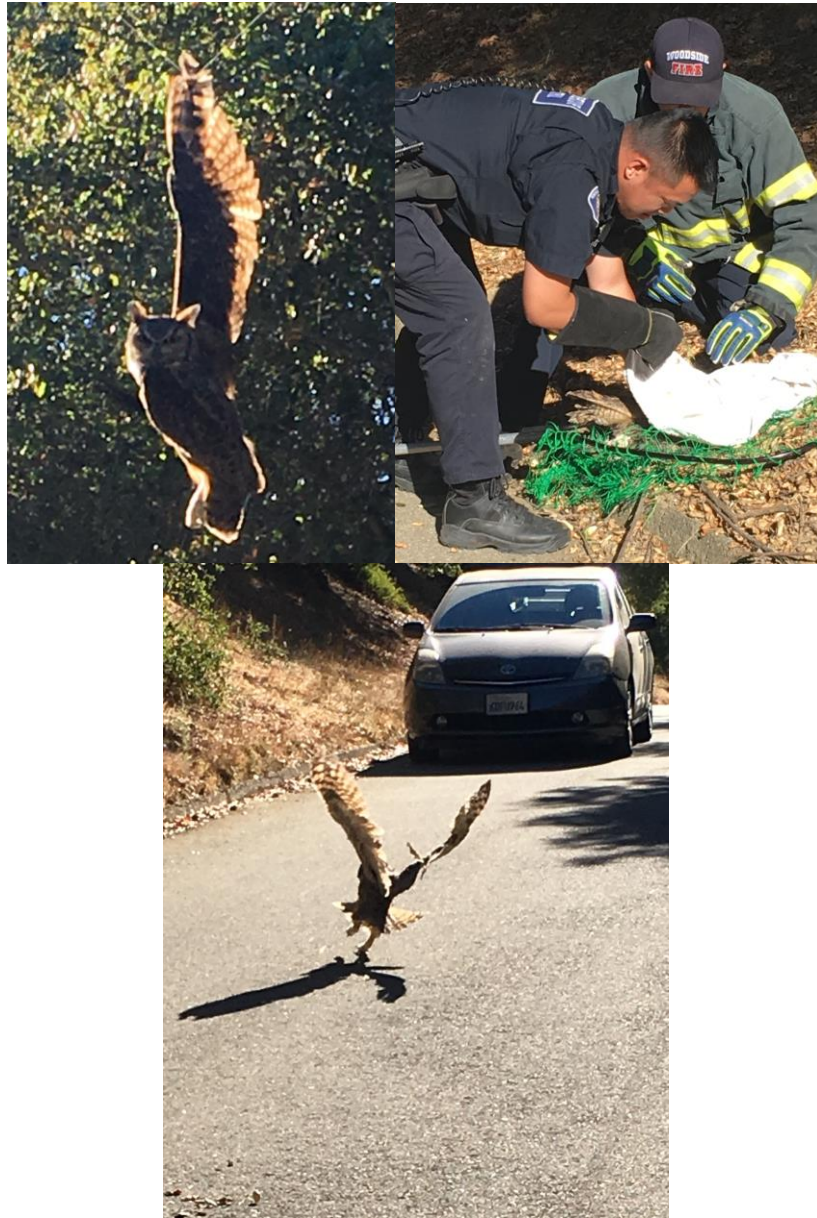
Woodside Fire Protection District staff was able to cut the string, and the owl fell down into the arms of PHS/SPCA staff who were underneath waiting to catch her. PHS/SPCA staff thoroughly examined the owl and found no injuries.

“Our rescue staff were able to untangle her wing from the string, and thankfully she suffered no injuries from her ordeal and was immediately released back to the wild. Had she needed treatment, we would have brought her back to our Wildlife Care Center,” according to Tarbox. “The rest of the abandoned kite string was carefully removed to prevent any further negative interaction with wildlife.”

PHS/SPCA’s Wildlife Care Center successfully rehabilitates 1,200 to 1,400 animals each year and is funded entirely by donations.

Great Horned Owls are native to North America and to the San Francisco Bay Area. They are highly adaptable birds and help keep rodent populations in check.

Three photos of the owl rescue can be found at [this link](#) including the owl hanging by the string, being examined and flying away after her rescue. Photos are courtesy of PHS/SPCA.



About the Peninsula Humane Society & SPCA

The Peninsula Humane Society & SPCA (PHS/SPCA) is a local, private, non-profit charitable organization dedicated to animal welfare. Among our major programs, PHS/SPCA adopts fully 100% of the healthy dogs and cats in our care and also, through our charitably funded Hope Program, makes well and finds homes for thousands of animals who come to us sick, injured, or too young to survive without supportive care. PHS/SPCA is truly an open admission shelter, not only accepting many pet animals who might be refused at other shelters, but also taking care of injured and orphaned native wildlife from San Francisco through San Mateo and the northern half of Santa Clara County. Our work means 6,300 lives saved each year. Please visit [www.phs-sPCA.org](http://www.phs-sPCA.org) to learn about all our programs and services, ways to help our animals and special events.