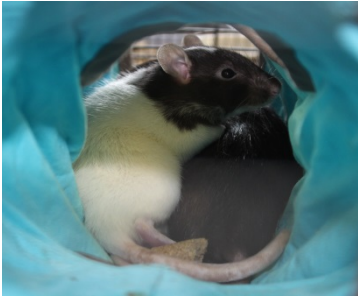


Domesticated Rats Available for Adoption at Peninsula Humane Society



Burlingame, CA—The Peninsula Humane Society & SPCA (PHS/SPCA) has a group of young domesticated rats available for adoption. The rats are two months old and were recently surrendered to PHS/SPCA.

“Rats make fantastic pets,” said PHS/SPCA’s Communications Manager Buffy Martin Tarbox. “They are extremely social, affectionate and intelligent. We currently have nine rats available for adoption, three males and six females.”

Rats are very clean animals, and similar to cats in that they will groom themselves. On average they live two to three years and are easy to care for. They eat pellets known as “rat blocks”, found at most pet stores and enjoy fruits and vegetables as snacks. Rats are generally happier with another rat friend, but they should be separated by gender to avoid breeding. It’s best to adopt rats pairs of the same gender.

“Rats can be a good pet choice for someone living in a small apartment. They don’t bark or need to be let outside,” according to Tarbox. “They rarely bite, so they are also good companion animals for children.”

PHS/SPCA encourages potential adopters to visit their Tom and Annette Lantos Center for Compassion at 1450 Rollins Road in Burlingame to meet the rats. The shelter is open seven days a week for adoptions, Monday through Friday 11:00 am to 6:00 pm and weekends 11:00 am to 5:00 pm.

Each rat’s adoption fee is \$10.

About the Peninsula Humane Society & SPCA

The Peninsula Humane Society & SPCA (PHS/SPCA) is a local, private, non-profit charitable organization dedicated to animal welfare. Among our major programs, PHS/SPCA adopts fully 100% of the healthy dogs and cats in our care and also, through our charitably funded Hope Program, makes well and finds homes for thousands of animals who come to us sick, injured, or too young to survive without supportive care. PHS/SPCA is truly an open admission shelter, not only accepting many pet animals who might be refused at other shelters, but also taking care of injured and orphaned native wildlife from San Francisco through San Mateo and the northern half of Santa Clara County. Our work means 6,300 lives saved each year. Please visit www.phs-sPCA.org to learn about all our programs and services, ways to help our animals and special events.

